

Filtration Solutions For Gas Processing In Midstream Operations



Inlet Gas Separation & Treatment

- ✓ **Condensate** Hydrocarbon Recovery Systems
- ✓ **Sour Gas Amine** Regeneration Filters
- ✓ **Glycol Dehydration** Carbon & Trap Filters
- ✓ **Glycol Regeneration** Liquid/Liquid Separators
- ✓ **Pre-Compression** Gas Filter/Separators
- ✓ **Post Compression** Gas Coalescers
- ✓ **Mole Sieve** Pre-Coalescers & Post Dust Filters



Cryogenic Extraction & NGL Recovery

- ✓ **Turbo Compressor** Lube Oil Filters
- ✓ **Refrigeration Compressor** Lube Oil Filters
- ✓ **Seal Gas** Filters & Coalescers
- ✓ **Gearbox Emissions** Oil Mist Eliminators
- ✓ **Crankcase Emissions** Oil Mist Eliminators
- ✓ **Fuel Gas** Filters & Coalescers
- ✓ **Control Fluid** Acid Conditioning Filters & Systems
- ✓ **NOX Injection** Water Filters
- ✓ **Lube Oil Conditioning** Varnish Mitigation Systems

NGL Fractionation

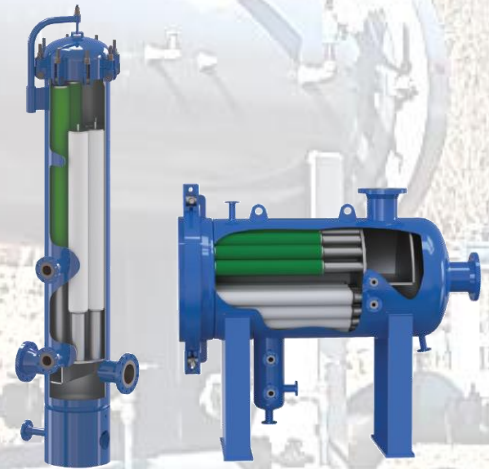
- ✓ **Inlet Y-Grade Feed NGL** Filters & Coalescers
- ✓ **Amine Contactors** Extraction Separation
- ✓ **Amine Regeneration** Particulate Filters
- ✓ **Regenerant** Filters and Coalescers

Existing Vessel Upgrades to O-Ring Sealed Elements

- ✓ **Tubesheet Upgrades** Filters & Mesh Pad Coalescers
- ✓ **Cartridge Filter Upgrades** Tube Guide Replacement
- ✓ **Bag Filter Upgrades** Retainer Basket Replacement

Rental & Pilot Filters

- Liquid Filters
- Gas Filter/Separators
- Liquid Phase Coalescers
- Dry Gas Filters
- Wet Gas Coalescers



Hydrocarbon Separation From
Produced Water, Glycol and Amine



Northeast Filter & Equipment Co.
135 Parker Court
Chardon, OH 44024
PH: 800-333-6332
FX: 440-285-0730
www.nefilter.com



**Oil Mist Eliminator
For Crankcase & Gearbox**



**Lube Oil Duplex Filters
& Transfer Valves**



**Varnish Mitigation
Systems for Lube Oil**



**Seal & Fuel Gas Filters
Gas Conditioning Skids**



**Wet Gas
Coalescers**



**Wet & Dry Gas
Filter Separators**



**Sorbent Media
Filters**



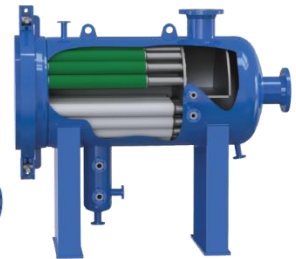
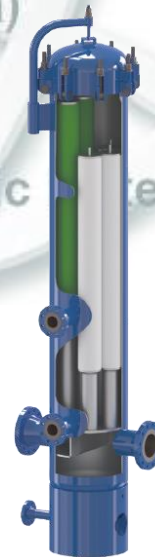
Others:
Special Certifications, Domestic Materials, etc.



**Quick Opening
Closures**



**Liquid Process
Filtration**



**Liquid/Liquid
Phase Coalescers**